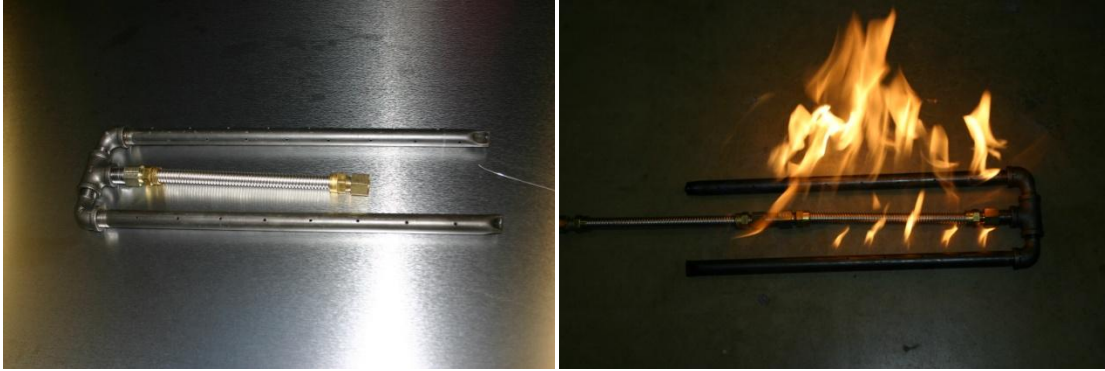


Pipe Burners Retail

Double Steel Head: 26.50



With 2 steel burners:

12" x 12" = 56.50

12" x 18" = 62.75

18" x 18" = 69.25

18" x 24" = 74.25

24" x 24" = 79.25

24" x 30" = 87.25

30" x 30" = 95.25

30" x 36" = 102.50

36" x 36" = 108.00 over 36" it is recommended to use "H" style

36" x 42" = 113.00

42" x 42" = 118.50

42" x 48" = 123.50

48" x 48" = 129.50

60" x 60" = 160.00

Double Stainless Head: 43.50

With 2 stainless steel burners:

12" x 12" = 113.50

12" x 18" = 144.50

18" x 18" = 162.75

18" x 24" = 180.25

24" x 24" = 200.00

24" x 30" = 218.50

30" x 30" = 236.75

30" x 36" = 254.80

36" x 36" = 273.50

36" x 42" = 292.00

42" x 42" = 310.50

42" x 48" = 329.25

48" x 48" = 347.25

60" x 60" = 421.25

Steel Triple head: 33.50



RETAIL



With 3 steel burners:

12" x 12" x 12" = 78.75

12" x 12" x 18" = 85.25

12" x 18" x 18" = 91.50

18" x 18" x 18" = 98.00

18" x 18" x 24" = 103.20

18" x 24" x 24" = 109.50

24" x 24" x 24" = 114.00

24" x 24" x 30" = 121.50

24" x 30" x 30" = 129.50

30" x 30" x 30" = 137.25

30" x 30" x 36" = 142.75

30" x 36" x 36" = 149.25

36" x 36" x 36" = 155.25

36" x 36" x 42" = 161.50

36" x 42" x 42" = 168.00

42" x 42" x 42" = 171.50

42" x 42" x 48" = 176.75

42" x 48" x 48" = 182.00

48" x 48" x 48" = 187.50

Stainless Steel Triple head: 51.25

With 3 stainless steel burners:

12" x 12" x 12" = 172.50

12" x 12" x 18" = 190.75

12" x 18" x 18" = 208.75

18" x 18" x 18" = 227.25

18" x 18" x 24" = 245.50

18" x 24" x 24" = 264.50

24" x 24" x 24" = 282.75

24" x 24" x 30" = 319.50

24" x 30" x 30" = 338.00

30" x 30" x 30" = 356.00

30" x 30" x 36" = 375.25

30" x 36" x 36" = 393.20

36" x 36" x 36" = 411.60

36" x 36" x 42" = 430.40

36" x 42" x 42" = 448.80

42" x 42" x 42" = 467.20

42" x 42" x 48" = 485.20

42" x 48" x 48" = 504.00

48" x 48" x 48" = 718.00

Steel "H" burner head: 43.50

RETAIL



With 4 steel burners:

- 12" x 12" x 12" x 12" = 26" OA = 104.00
- 12" x 12" x 18" x 18" = 32" OA = 116.75
- 18" x 18" x 18" x 18" = 38" OA = 130.00
- 18" x 18" x 24" x 24" = 44" OA = 139.50
- 24" x 24" x 24" x 24" = 50" OA = 150.50
- 24" x 24" x 30" x 30" = 56" OA = 166.50
- 30" x 30" x 30" x 30" = 62" OA = 181.25
- 30" x 30" x 36" x 36" = 68" OA = 194.75
- 36" x 36" x 36" x 36" = 74" OA = 206.75
- 36" x 36" x 42" x 42" = 80" OA = 218.50
- 42" x 42" x 42" x 42" = 86" OA = 226.00
- 42" x 42" x 48" x 48" = 92" OA = 238.50
- 48" x 48" x 48" x 48" = 98" OA = 249.25

Stainless Steel "H" burner head: 64.00

With 4 stainless steel burners:

- 12" x 12" x 12" x 12" = 26" OA = 224.00
- 12" x 12" x 18" x 18" = 32" OA = 261.25
- 18" x 18" x 18" x 18" = 38" OA = 298.50
- 18" x 18" x 24" x 24" = 44" OA = 335.50
- 24" x 24" x 24" x 24" = 50" OA = 382.50
- 24" x 24" x 30" x 30" = 56" OA = 408.50
- 30" x 30" x 30" x 30" = 62" OA = 445.50
- 30" x 30" x 36" x 36" = 68" OA = 482.00
- 36" x 36" x 36" x 36" = 74" OA = 519.25
- 36" x 36" x 42" x 42" = 80" OA = 556.00
- 42" x 42" x 42" x 42" = 86" OA = 592.00
- 42" x 42" x 48" x 48" = 92" OA = 630.00
- 48" x 48" x 48" x 48" = 98" OA = 667.25

Steel Double "H" burner head: 64.00

RETAIL



With 6 steel burners:

12" x 12" x 12" x 12" x 12" x 12" = 26" OA = 154.50
12" x 12" x 12" x 18" x 18" x 18" = 32" OA = 171.50
18" x 18" x 18" x 18" x 18" x 18" = 38" OA = 192.75
18" x 18" x 18" x 24" x 24" x 24" = 44" OA = 208.75
24" x 24" x 24" x 24" x 24" x 24" = 50" OA = 224.00
24" x 24" x 24" x 30" x 30" x 30" = 56" OA = 245.50
30" x 30" x 30" x 30" x 30" x 30" = 62" OA = 268.75
30" x 30" x 30" x 36" x 36" x 36" = 68" OA = 289.50
36" x 36" x 36" x 36" x 36" x 36" = 74" OA = 308.75
36" x 36" x 36" x 42" x 42" x 42" = 80" OA = 324.00
42" x 42" x 42" x 42" x 42" x 42" = 86" OA = 339.25
42" x 42" x 42" x 48" x 48" x 48" = 92" OA = 356.00
48" x 48" x 48" x 48" x 48" x 48" = 98" OA = 372.00

Stainless Steel Double "H" burner head: 89.50

With 6 stainless steel burners

12" x 12" x 12" x 12" x 12" x 12" = 26" OA = 329.25
12" x 12" x 12" x 18" x 18" x 18" = 32" OA = 384.00
18" x 18" x 18" x 18" x 18" x 18" = 38" OA = 409.50
18" x 18" x 18" x 24" x 24" x 24" = 44" OA = 494.50
24" x 24" x 24" x 24" x 24" x 24" = 50" OA = 550.50
24" x 24" x 24" x 30" x 30" x 30" = 56" OA = 604.50
30" x 30" x 30" x 30" x 30" x 30" = 62" OA = 660.75
30" x 30" x 30" x 36" x 36" x 36" = 68" OA = 716.75
36" x 36" x 36" x 36" x 36" x 36" = 74" OA = 770.75
36" x 36" x 36" x 42" x 42" x 42" = 80" OA = 827.25
42" x 42" x 42" x 42" x 42" x 42" = 86" OA = 879.50
42" x 42" x 42" x 48" x 48" x 48" = 92" OA = 937.25
48" x 48" x 48" x 48" x 48" x 48" = 98" OA = 990.97

Steel Individuals

12" = 12.75

18" = 19.25

24" = 24.50

30" = 32.00

36" = 39.25

42" = 44.50

48" = 48.75

60" = 64.00

RETAIL

Stainless Steel Individuals

12" = 38.00

18" = 55.25

24" = 74.50

30" = 92.50

36" = 110.75

42" = 129.50

48" = 147.25

60" = 184.50

Double Steel Head: 25.50

Double Stainless Head 43.50

Steel Triple head: 33.50

Stainless Triple Head 51.25

Steel "H" burner head drilled: 43.50

Stainless "H" burner head drilled 64.00

Steel Double "H" burner head drilled: 64.00

Stainless Double "H" burner head drilled 89.50

12" flex line 19.50

18" flex line 21.25

Burners Retail

Steel

1.25" straight steel pipes

2.00" bent steel pipes

Stainless steel

3.85" straight stainless steel

5.25" bent stainless steel